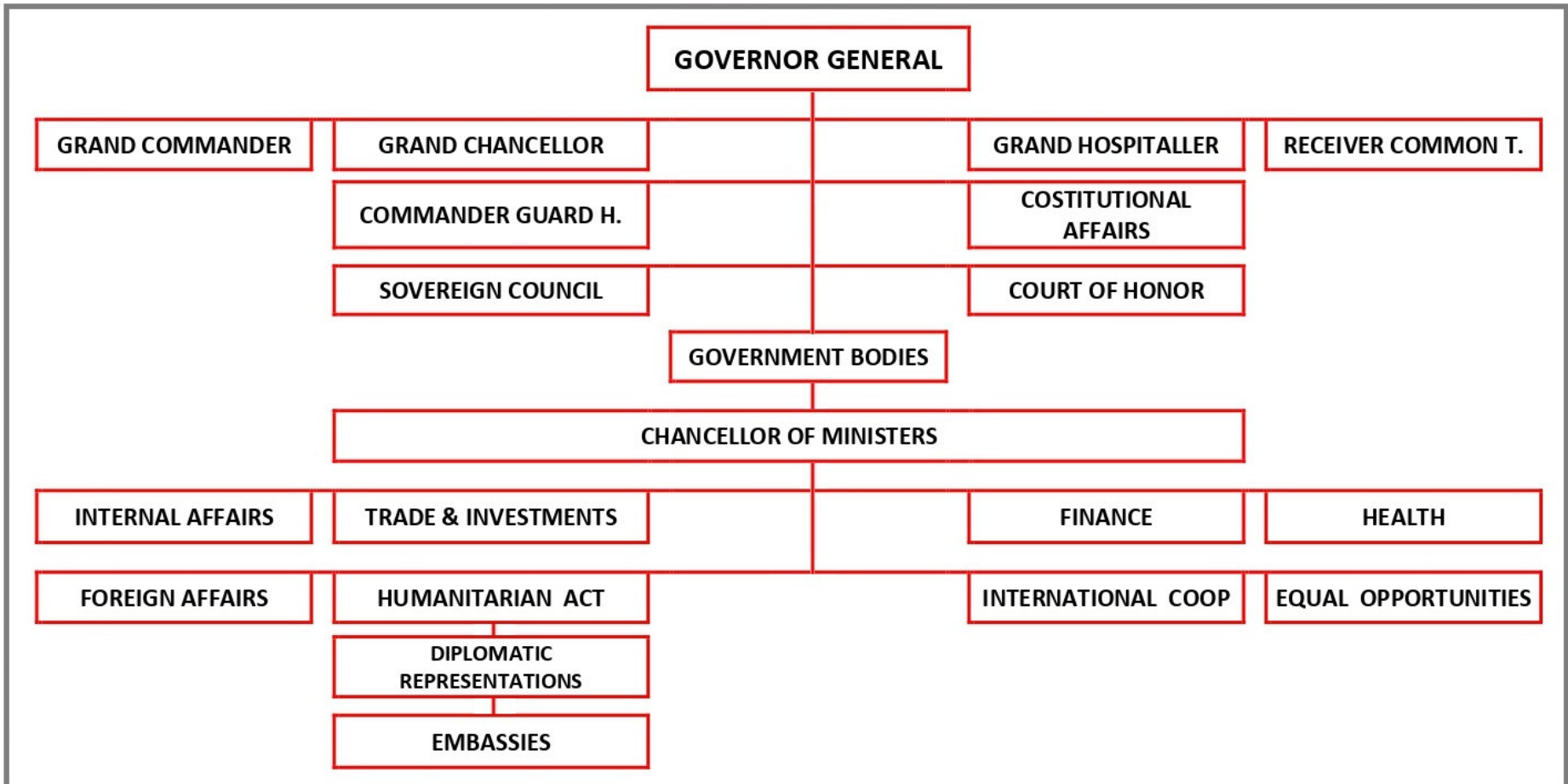
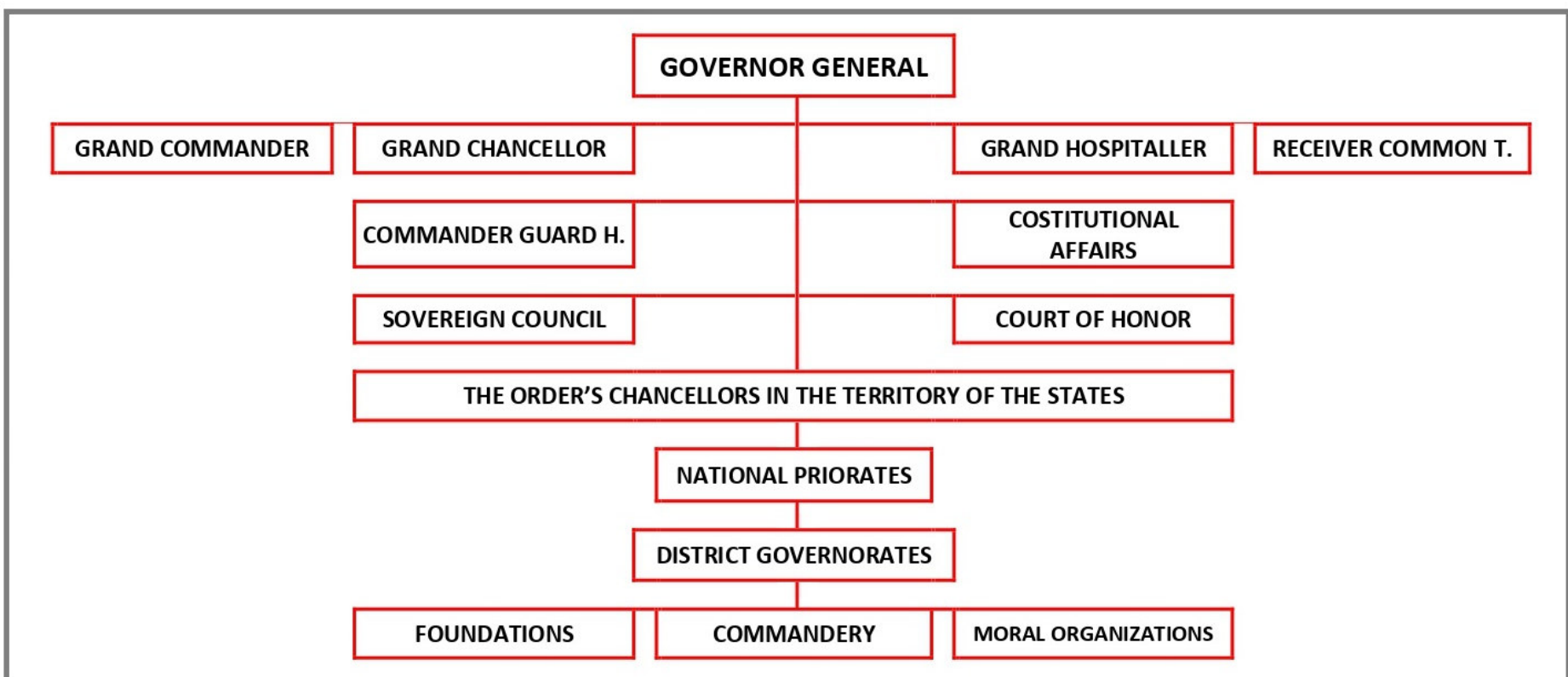




SOVEREIGN ORDER MELITENSE OF SAINT JOHN OF JERUSALEM



THE ORTHODOX ORDER OF MALTA IS PRESENT IN THE TERRITORIES OF THE STATES ALSO WITH THE ANCIENT STRUCTURE OF THE NATIONAL PRIORIES



GRAND COMMANDER	GRAND CHANCELLOR	GRAND HOSPITALLER	RECEIVER COMMON T.
<p>The Grand Commander is the religious superior of the Professed Knights and of the Knights and Dames in Obedience. His duties include: spreading the principles of the Faith, compiling reports on visits to be sent to the Order, and seeing to the religious aspects of the activities of Professed Knights and Knights in Obedience. In particular he is in charge of instructing the members of the Sovereign Orthodox Order in the fulfilment of the principles of living the Faith and caring for the poor and the sick.</p>	<p>For Humanitarian Action and International Cooperation. The Grand Hospitaller's responsibilities include the offices of Minister of Health and of Social Affairs and Minister for Humanitarian Action and Minister for International Cooperation. He coordinates and supervises the initiatives of the Grand Priors, National Associations and other Order institutions world-wide, all of which are involved in charitable and humanitarian actions, and ensures that principles of care and human dignity are respected. The Grand Hospitaller is assisted by a Council composed of representatives of all the territorial regions where the Order of Malta operates</p>	<p>The Grand Chancellor is responsible for the relations with the Priors and National Associations of the Order in the world, and for coordinating the activities of the Government of the Order.</p>	<p>The Receiver of the Common Treasure, directs the administration of the finances and the property of the Order in coordination with the Grand Chancellor, under the authority of the Governor General and the surveillance of the Board of Auditors. He is responsible for drawing up the annual accounts, relating to the economic and financial state of the Order, submitting them to the Board of Auditors and to the Governor General with the advice of the Sovereign Council, for approval. Also with the advice of the Sovereign Council, he submits to the Governor General for approval the acceptance of inheritances, bequests and donations, and the disposal and subsequent reinvestment of the goods of the Order. He manages and supervises the Magistral Postal Service and, through the Secretary General, the internal services of the Magistral household, the Personnel Office of the Grand Magistry, the Office of Technical Services and the superintendence of the Magistral Palace and related buildings. With the mandate of the Governor General, the Receiver also supervises the administration of the organisations and works of the Order. He is the counter-signatory for acts of disposal or assignment and contracts which involve the property of the Grand Magistry and the Priors.</p>